

ENDCAP SPACE FOR LEASE WEST LEBANON, NH – FORMER PIER 1



GRANITE
COMMERCIAL REAL ESTATE
INITIATIVE AND INTEGRITY

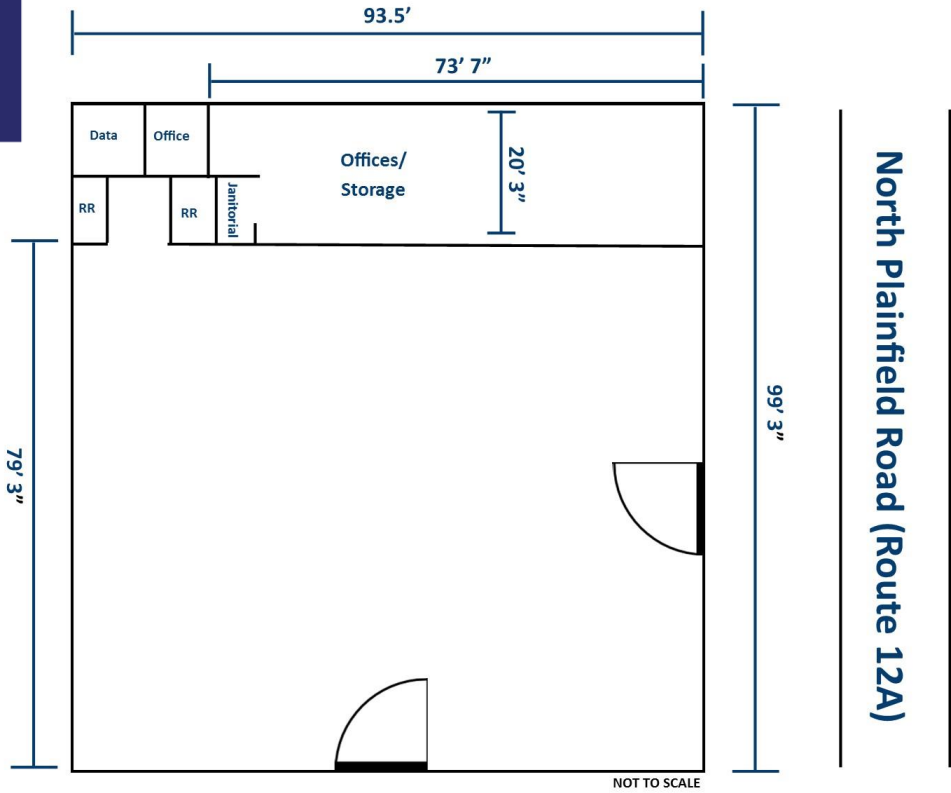


Photo for illustrative purposes only, not reflective of the space.

James Prieto, Director of Real Estate
Office: (603) 669.2770 /
Mobile: (603) 867.3183
Email: jprieto@granitecre.com

AVAILABLE: 9,430 SF
LEASE RATE: PLEASE CONTACT
GRANITECRE.COM

2



PROPERTY DETAILS

- Staples anchored shopping center
- Endcap Available: 9,430 SF NNN
- Total center: 61,550 SF
- Land Area: 5.42
- Year Built: 1973
- Zoning: General Commercial
- Traffic Count: I-89: 40,772
No. Plainfield Road (Rte. 12A): 15,822
- Parking: Surface
- Other tenants include: Mattress Firm, Vanessa's Hair Salon, Ziggy's Pizza

DEMOGRAPHICS

(15 MI RADIUS)

2018 Population



67,546 +/-

2018 Households:



27,323 +/-

2018 Average HH Median Income:



\$72,520

SITE INFORMATION

GRANITECRE.COM

254 NORTH PLAINFIELD ROAD WEST LEBANON, NH

The Staples Shopping Center is centrally located in the heart of New Hampshire and Vermont's Upper Valley Region on Route 12A.



- More than 10 major shopping centers in West Lebanon's prime retail corridor.
- Proximity to Vermont border draws from its residents to benefit from NH's zero percent sales tax advantage.
- Minutes away from Hanover, NH; home of Dartmouth College, Hitchcock Medical Center and the Norris Cotton Cancer Center.
- Over 2 million regional visitors per year for shopping, sightseeing, outdoor recreation and sports.

254 NORTH PLAINFIELD ROAD
WEST LEBANON, NH



GRANITE
COMMERCIAL REAL ESTATE
INITIATIVE AND INTEGRITY



FOR MORE INFORMATION CONTACT:

James Prieto, Director of Real Estate

Office: (603) 669.2770 / Mobile: (603) 867.3183

Email: jprieto@granitecre.com

GRANITECRE.COM